

## Tutorial 1

### Business process model creation using Oracle BPA Suite

#### Overview

This is the first tutorial in the three part series.

This tutorial demonstrates the creation of a business process model using the Oracle BPA Suite and the subsequent generation and sharing of the metadata (referred to as the process blueprint) with IT.

Business process models are a graphical representation of a business process and are created by business users to represent the sequence of tasks that are performed from initiation to completion for a given process. The process models are specified using the industry standard Business Processing Modeling Notation ([BPMN](#)).

The business requirements contained in these models are then shared with IT via the blueprint mechanism. This has two key benefits:

1. Ensures that the business model drives the IT development process.
2. Translating the business requirements to an almost ready set of BPEL processes.

Additional [information](#) on Oracle BPA Suite.

#### Prerequisites

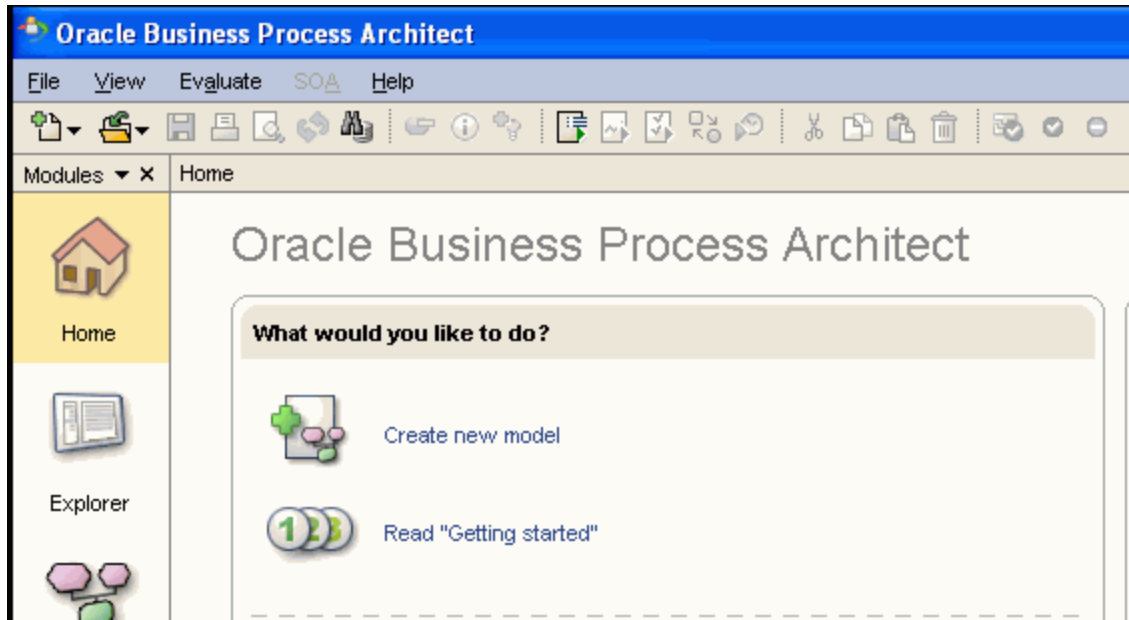
Oracle Business Process Analysis Suite 10g, available [here](#)

**Time to complete:** Approximately 1 hour.

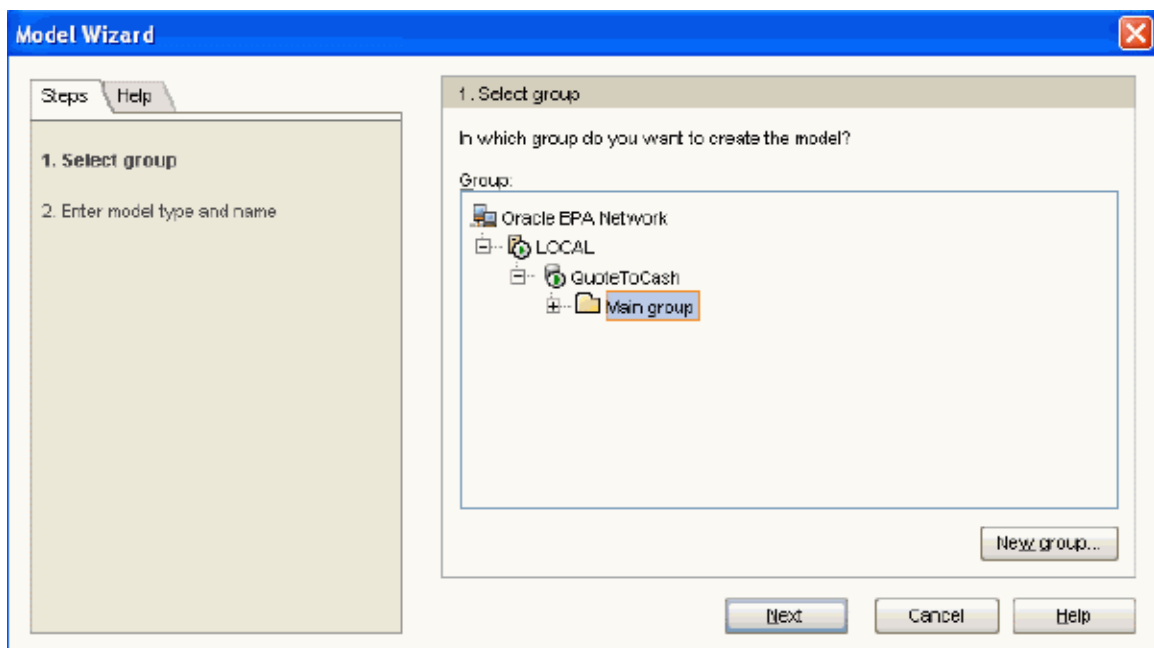
I. Create the Business Process Diagram .....	3
II. Generate Blueprint.....	9
III. Summary .....	10

## I. Create the Business Process Diagram

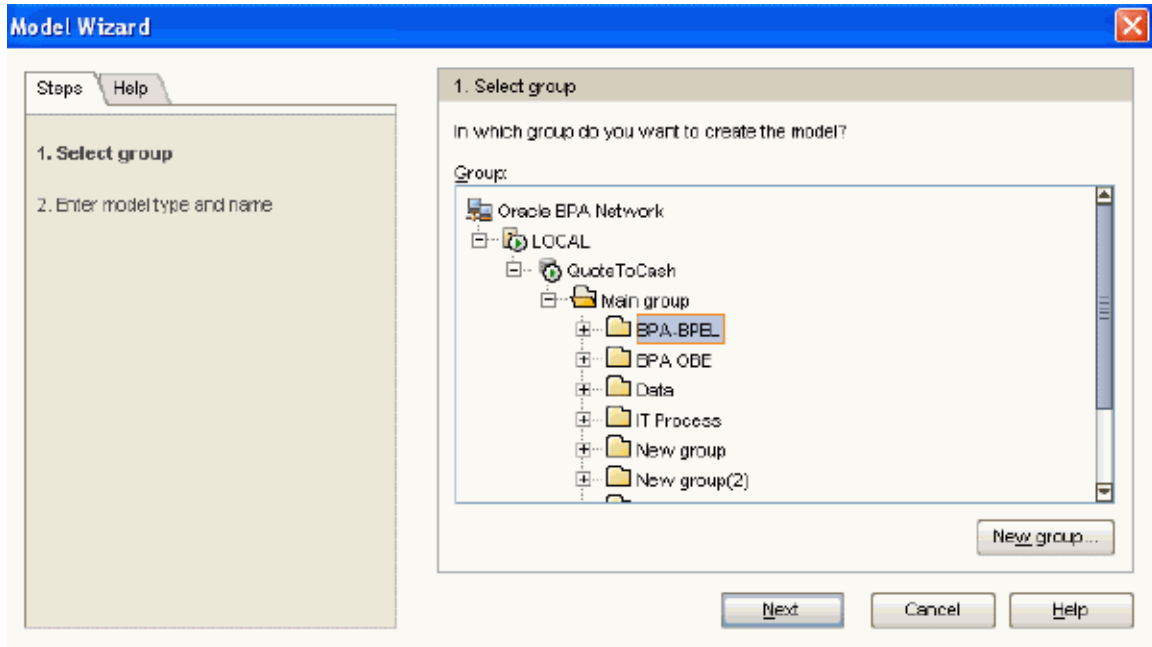
1. Click on **Home > Create new model** to bring up the Model Wizard.



2. Navigate to Main group and click on **New group ...**

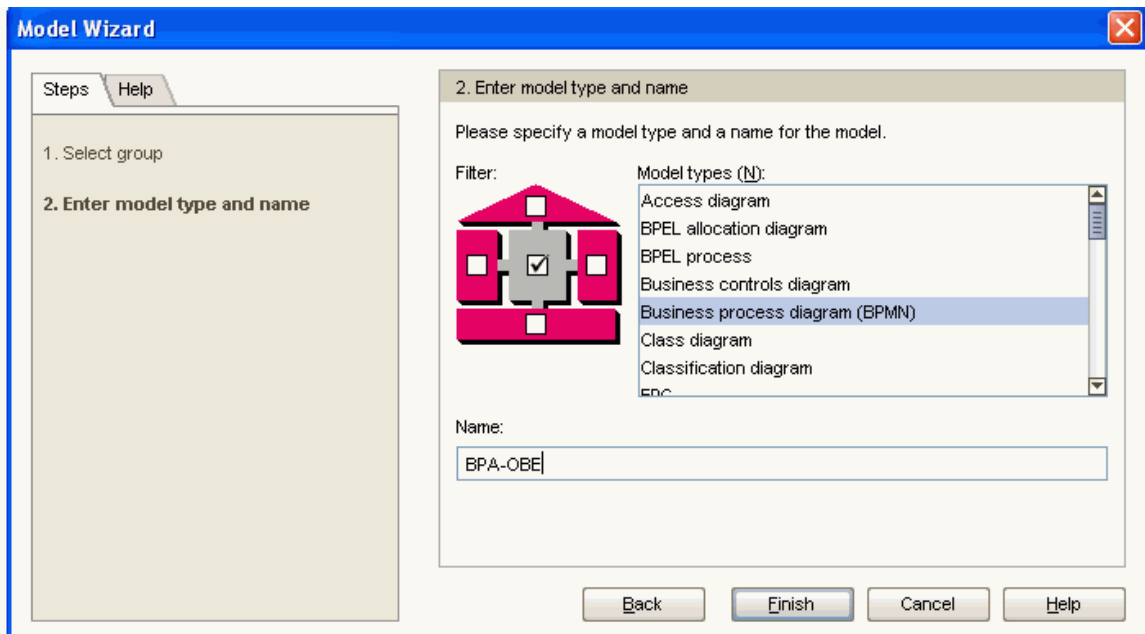


3. Enter **BPA-BPEL** as the group name and click **Next**.

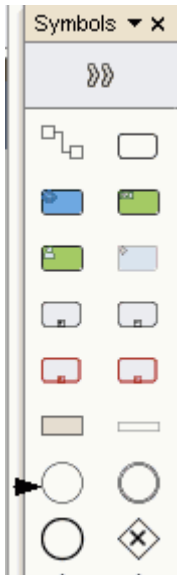


4. Select **Business process diagram (BPMN)** and enter **BPA-OBE** as the Name.

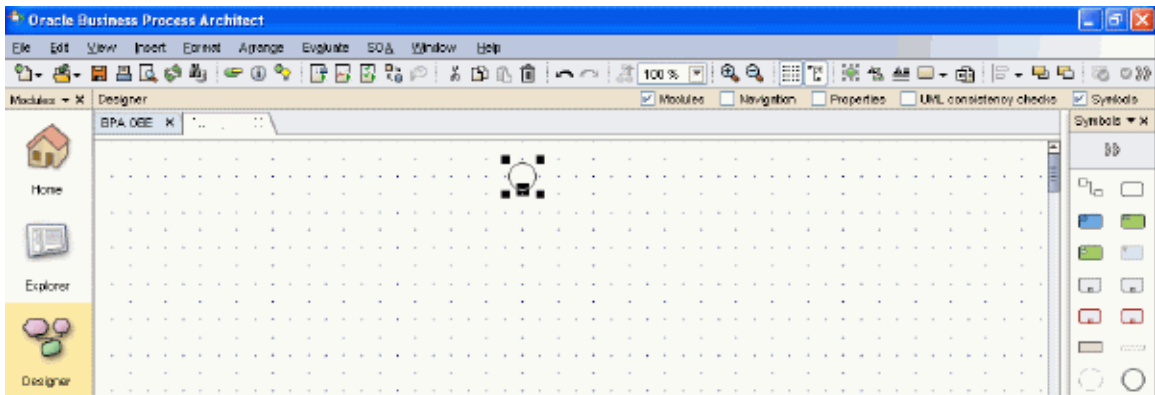
5. Click **Finish**.



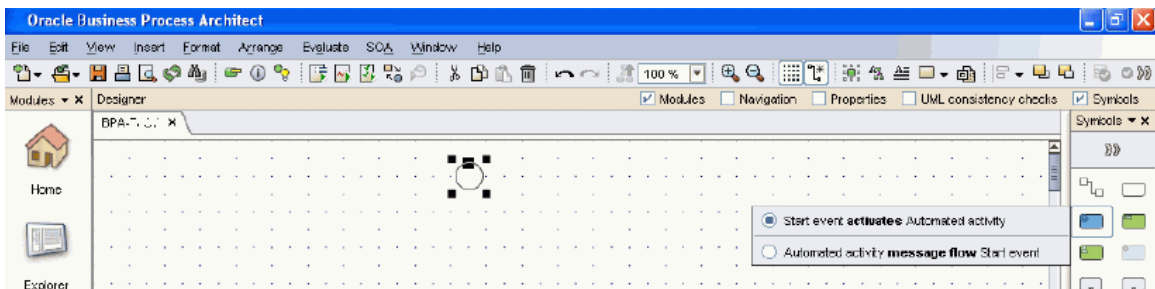
- This brings up the BPA Designer. Click on the **Start event object** in the Symbols panel (as indicated by the arrow below).



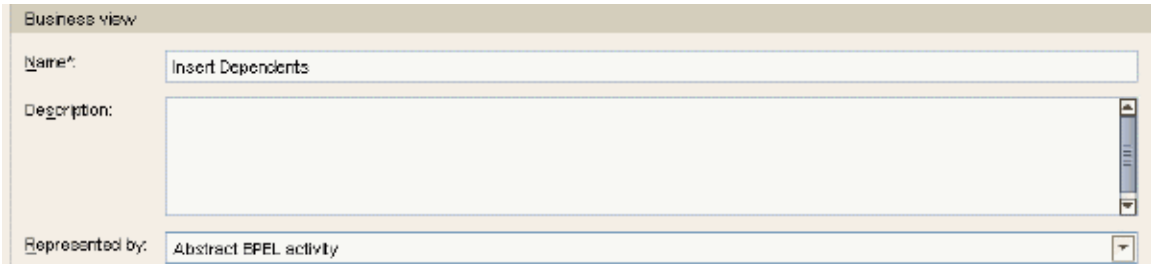
- Click on a spot in the business process diagram to create the Start object.



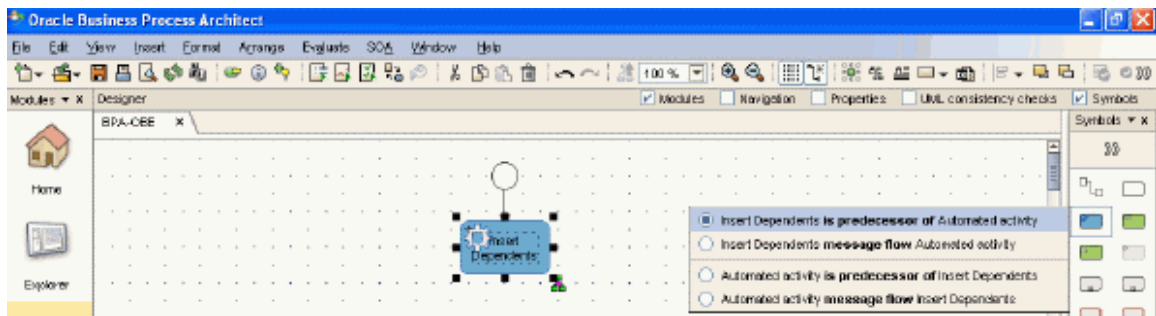
- Click on the **Automated activity event** in the Symbols panel and then click on a spot below the previously created Start object.



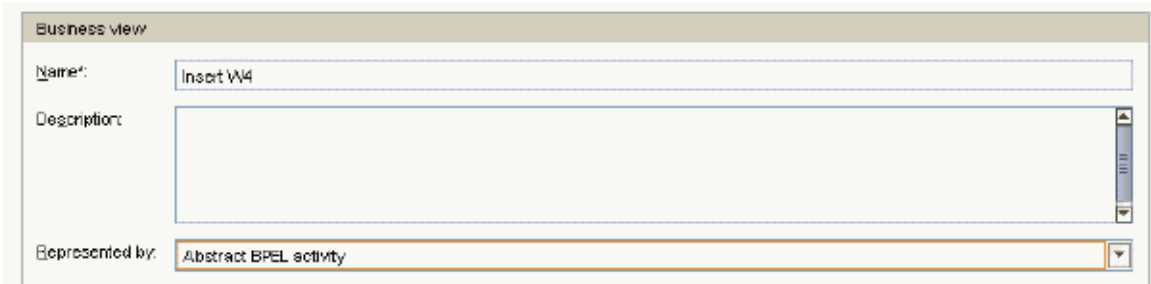
9. Enter **Insert Dependents** as the Name. Select **Abstract BPEL activity** in the Represented by drop down list.
10. Click **OK** (at the bottom of the screen).



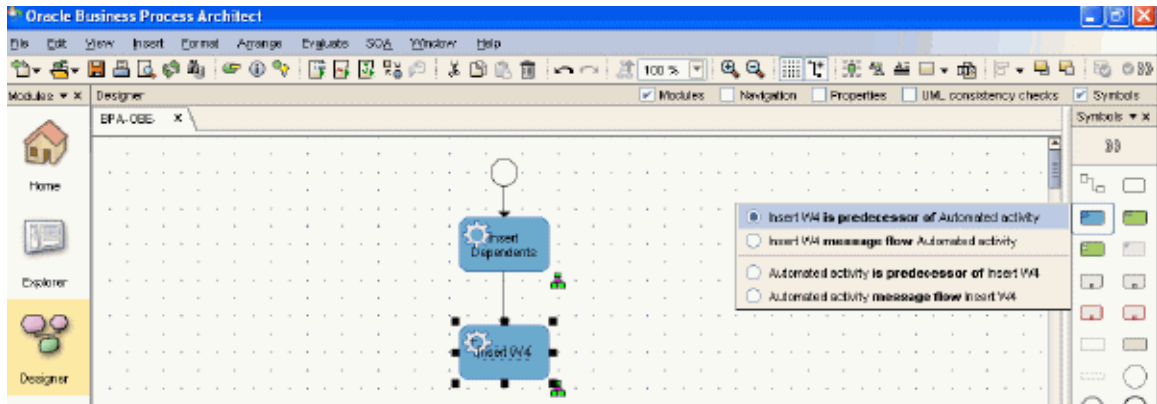
11. Click on the **Automated activity event** in the Symbols panel and then click on a spot below the previously created Insert Dependents object



12. Enter **Insert W4** as the Name. Select **Abstract BPEL activity** in the Represented by drop down list.
13. Click **OK** (at the bottom of the screen).

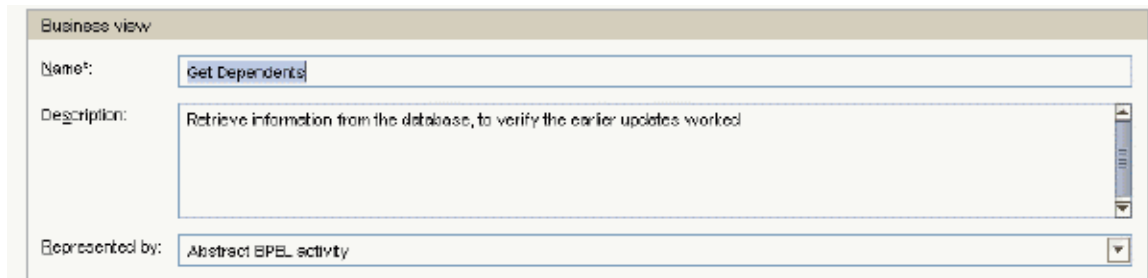


14. Click on the **Automated activity event** in the Symbols panel and then click on a spot below the previously created Insert W4 object.

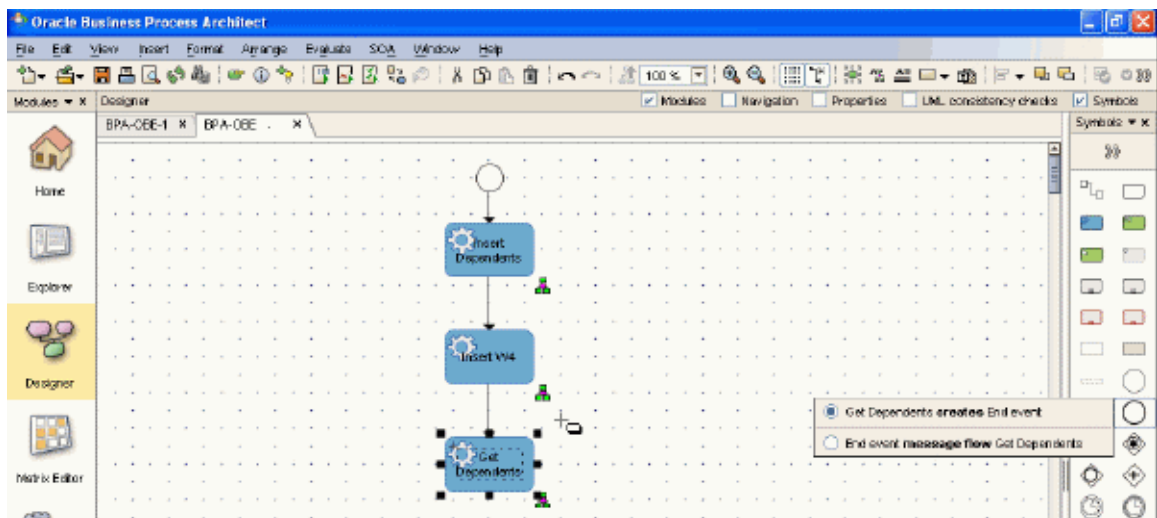


15. Enter **Get Dependents** as the Name. Select **Abstract BPEL activity** in the Represented by drop down list.

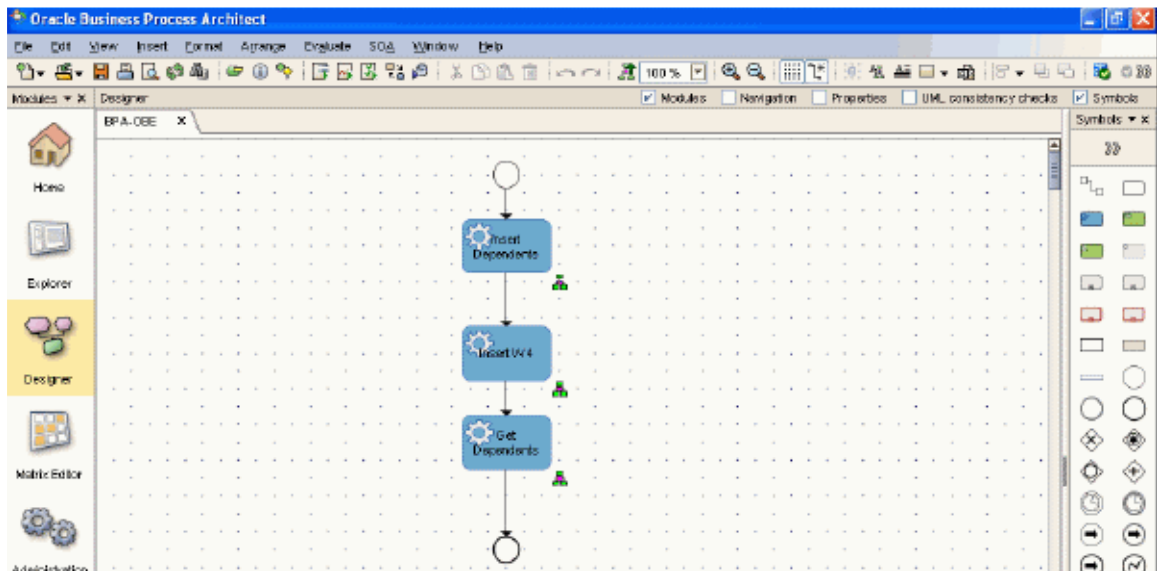
16. Click **OK** (at the bottom of the screen).



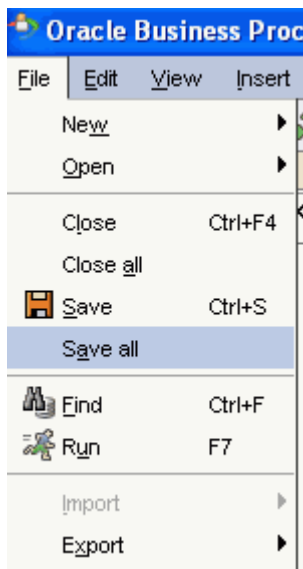
17. Click on the **End event** in the Symbols panel and then click on a spot below the previously created Get Dependents object.



18. This completes the creation of the business process diagram.



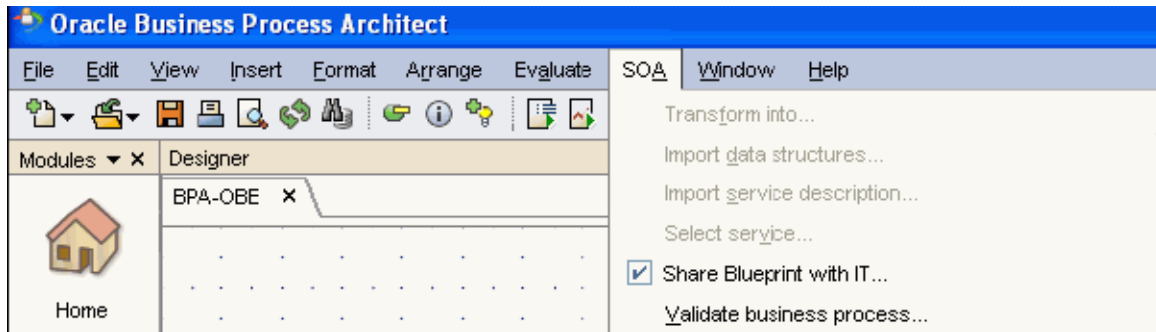
19. Select **File > Save all**



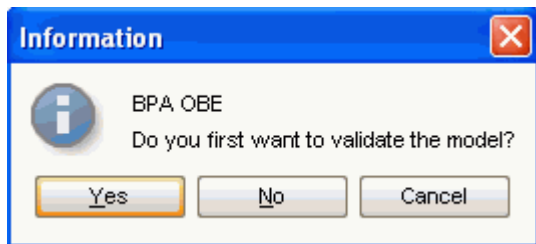


## II. Generate Process Blueprint

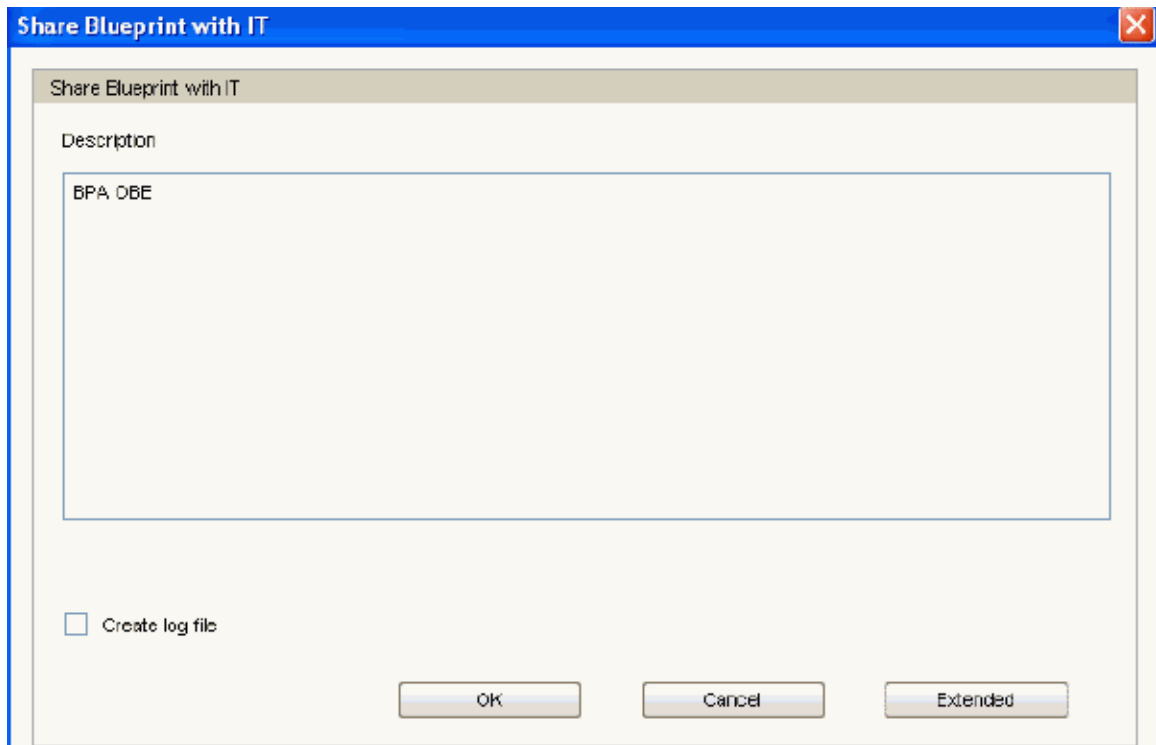
1. Select **SOA > Share Blueprint with IT.**



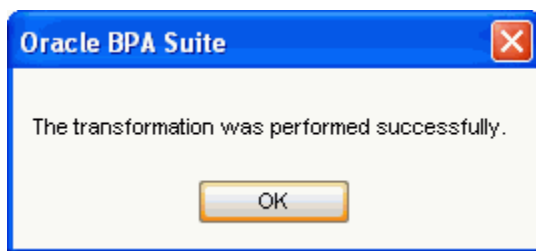
2. Select **No** to skip the validation.



3. Select **OK**.



4. Select **OK** to complete the Blueprint creation.



### III. Summary

This concludes the role of the business analyst. Subsequent tutorials (Tutorials #2 and #3) will illustrate how this blueprint can be used by an IT developer to generate executable software based on the given business requirements.